



Steps to Program Your Radios

Window 7&10

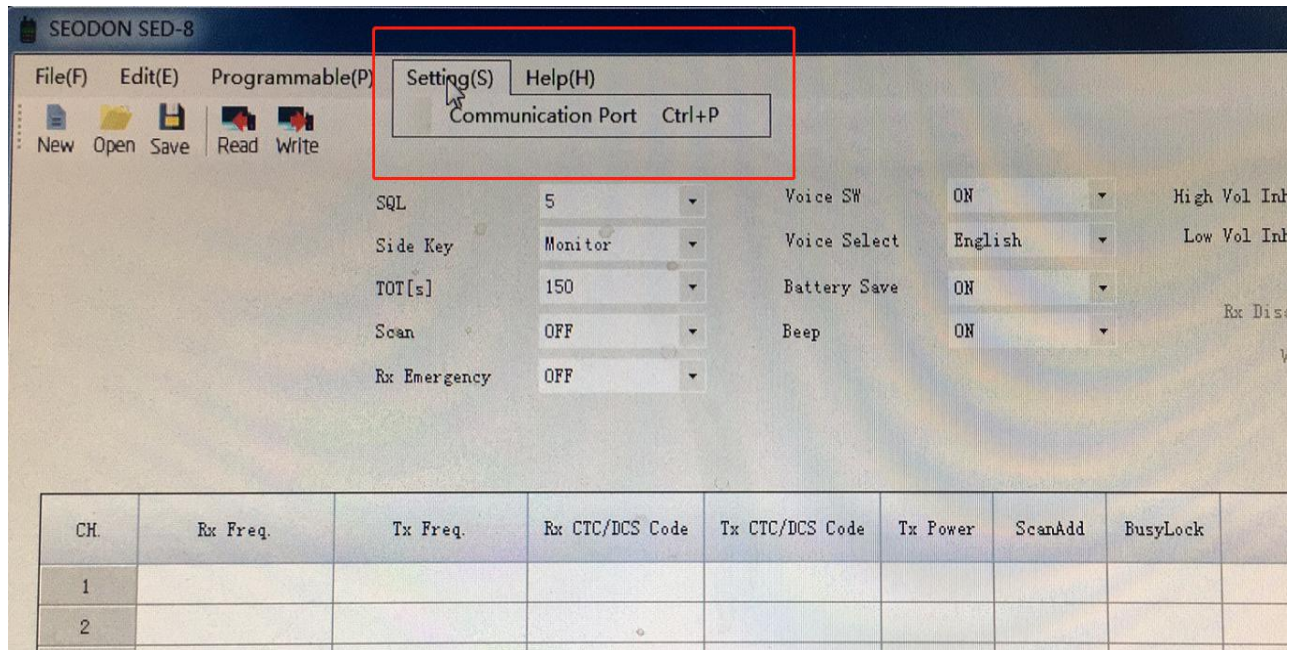
1. This is the guide for programming Seodon SED-8 walkie talkies with windows 7, system win10 has the similar steps. Please use the correct programming cable before programme. If you do not know how to choose the cable, please send inquire to support@seodonradio.com.

2. Once the programming cable is ready ,turn on your radio to any channel .plug the 2-pin end into the earpiece jack of SED-8, the other USB end goes to your computer USB port.Double click the USB driver exe. And SED-8 exe. to install the USB driver and programming software, after installing all the tools, firstly, please make sure you choose the right communication port. See Flig.1, Flig.2

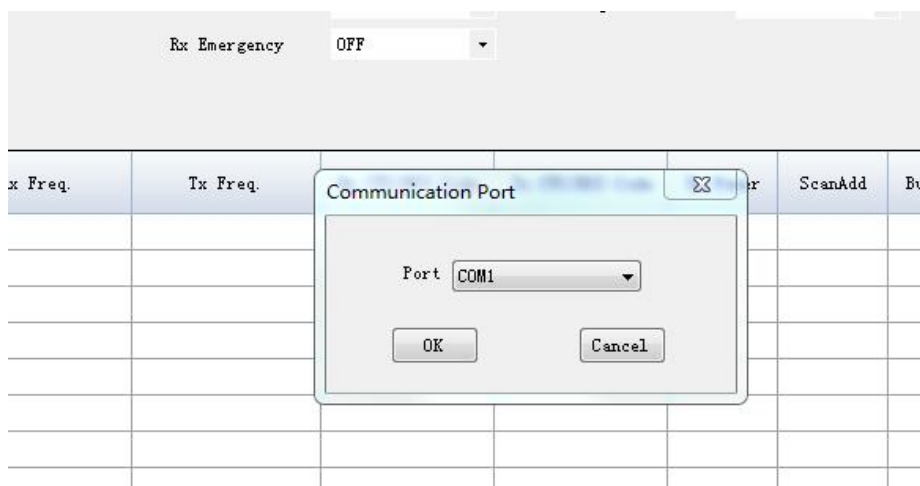


Steps to Program Your Radios

Window 7&10



Flig.1



Flig.2

Steps to Program Your Radios

Window 7&10

3. How to make sure the right COM(communication port).
Make sure your USB driver COM is same with the programming software COM. How to know the computer(Win.7) USB driver COM. Steps:
Start---ManagementTools---ComputerManagement---DeviceManager----Port(COM&LPT)---USB-SERIALCH340(COM1,2,3...)

You should know which USB-SERIAL CH340 COM your computer is, choose the same COM for the programming software. See Flig.3, Flig.4,Flig.5,Flig.6



Flig.3

Steps to Program Your Radios

Window 7&10



Flig.4

Steps to Program Your Radios

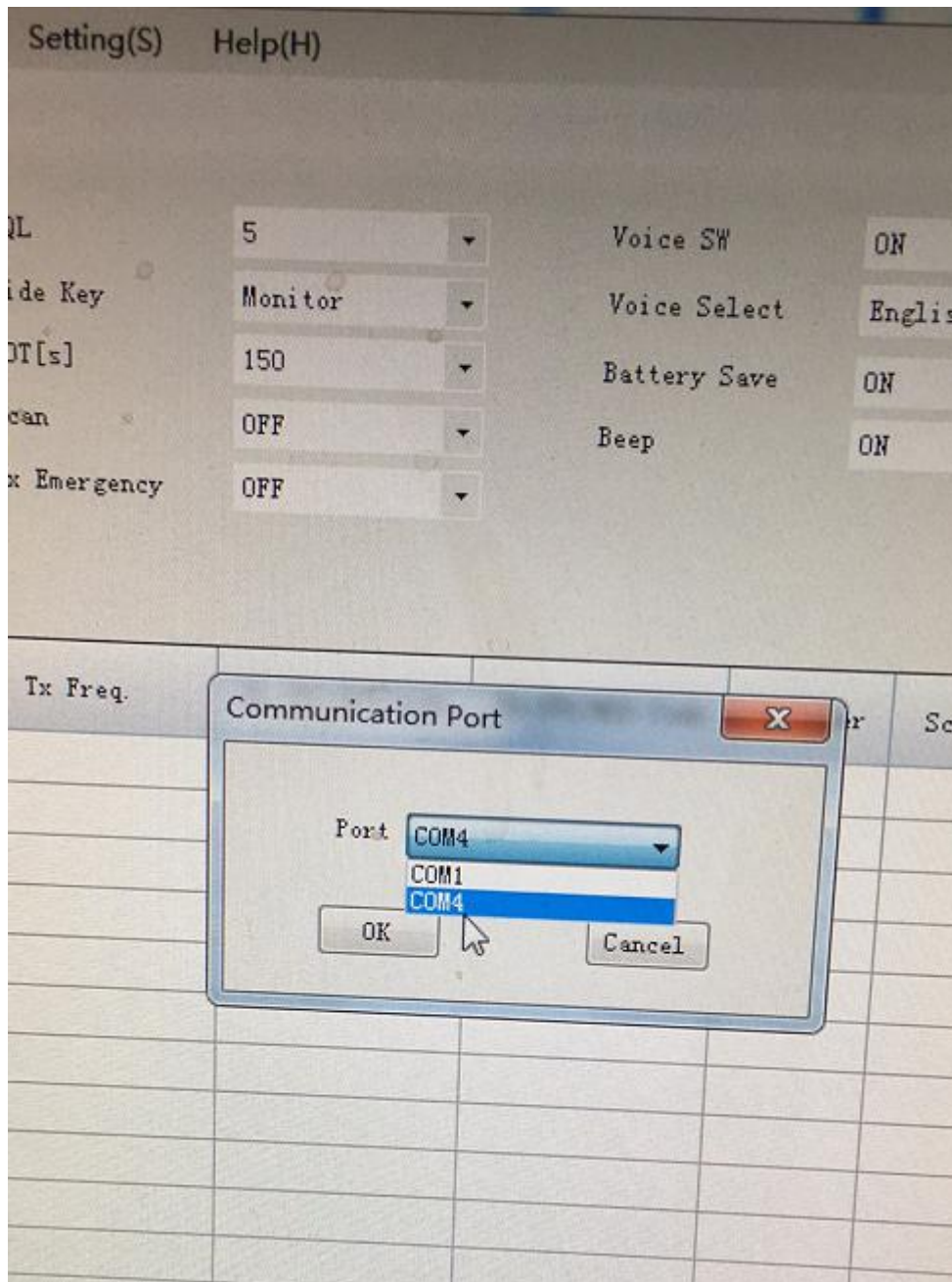
Window 7&10



Flig.5

Steps to Program Your Radios

Window 7&10

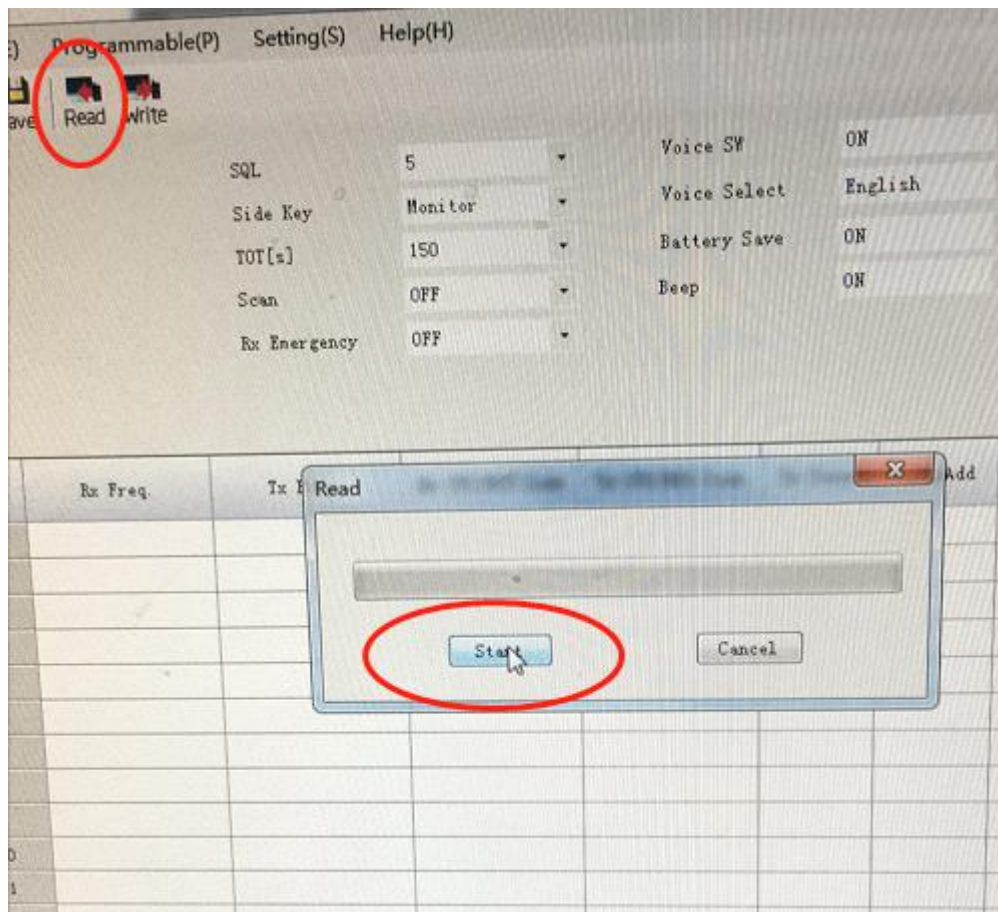


Flig.6

Steps to Program Your Radios

Window 7&10

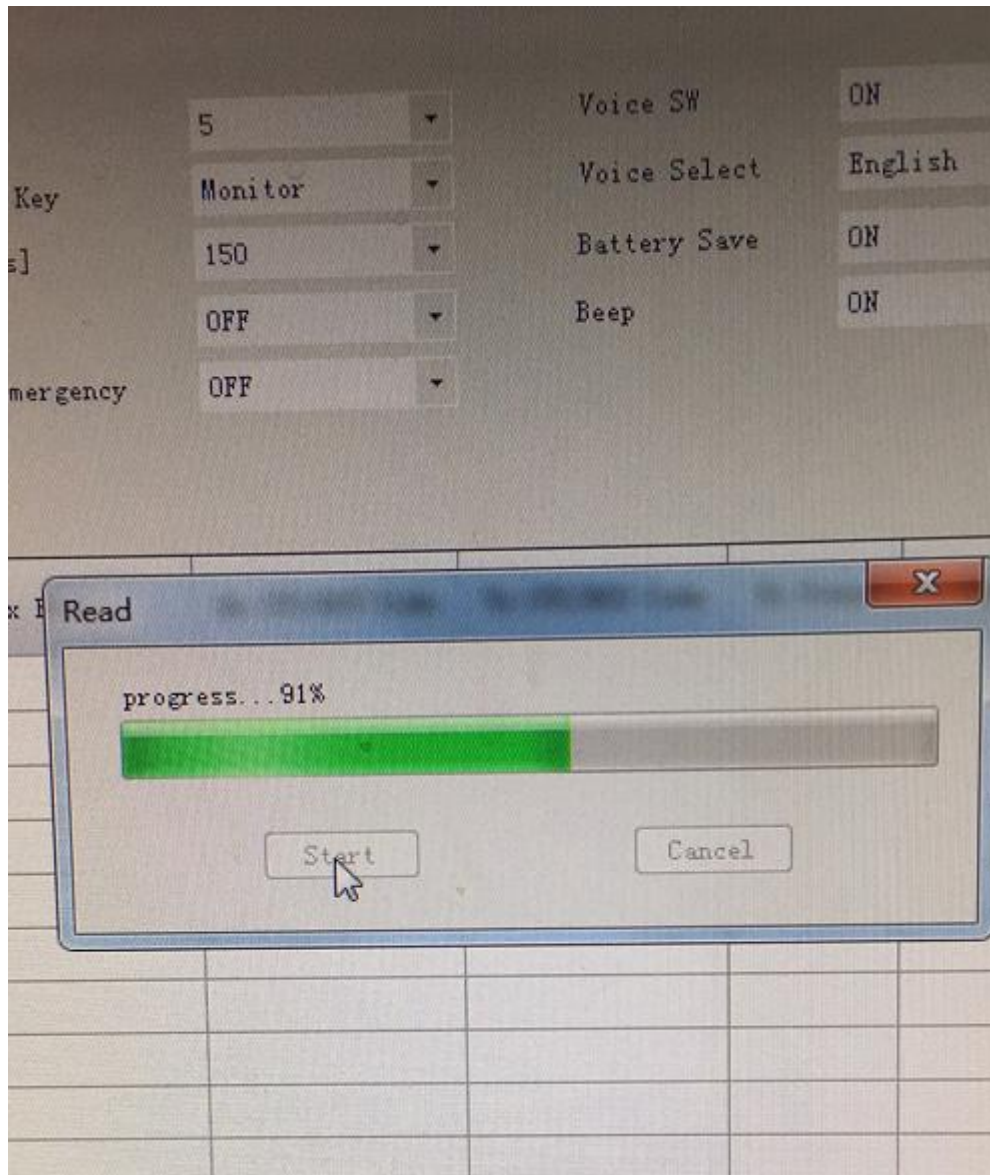
4. After choose the right communication port COM, read to load the data from your radios. See Flig.7 Flig.8



Flig.7

Steps to Program Your Radios

Window 7&10



Flig.8

Steps to Program Your Radios

Window 7&10

5. When transferring data, you can see the LED indicator on the radio is flashing, a list of channels data will be shown when loading complete. See Flig.9, Please do not disconnect the cable during the process. Click into any of the cells to edit channel data. please ensure frequency consistency while writing data to different radios in order to make them work together.



Steps to Program Your Radios

Window 7&10

SEODON SED-8

File(F) Edit(E) Programmable(P) Setting(S) Help(H)

New Open Save Read Write

SQL: 3 Voice SW: ON High Vol Inhibit TX: ☒
Side Key: Monitor Voice Select: English Low Vol Inhibit TX: ☒
TOT[s]: 150 Battery Save: ON VOX: ☐
Scan: OFF Beep: ON Rx Disable Vox: ☒
Rx Emergency: OFF Vox Gain: 1

CH	Rx Freq.	Tx Freq.	Rx CTC/DCS Code	Tx CTC/DCS Code	Tx Power	ScanAdd	BusyLock	JumpCode
1	454.22500	454.22500	69.3	69.3	HIGH	ON	OFF	OFF
2	454.32500	454.32500	100.0	100.0	HIGH	ON	OFF	OFF
3	454.42500	454.42500	151.4	151.4	HIGH	ON	OFF	OFF
4	454.52500	454.52500	203.5	203.5	HIGH	ON	OFF	OFF
5	454.62500	454.62500	241.8	241.8	HIGH	ON	OFF	OFF
6	454.72500	454.72500	D023N	D023N	HIGH	ON	OFF	OFF
7	454.82500	454.82500	D114N	D114N	HIGH	ON	OFF	OFF
8	454.92500	454.92500	D205N	D205N	HIGH	ON	OFF	OFF
9	455.12500	455.12500	D306N	D306N	HIGH	ON	OFF	OFF
10	455.22500	455.22500	D411N	D411N	HIGH	ON	OFF	OFF
11	455.32500	455.32500	D503N	D503N	HIGH	ON	OFF	OFF
12	455.42500	455.42500	D606N	D606N	HIGH	ON	OFF	OFF
13	455.52500	455.52500	D754N	D754N	HIGH	ON	OFF	OFF
14	402.12500	402.12500	OFF	OFF	HIGH	ON	OFF	OFF
15	435.55000	435.55000	OFF	OFF	HIGH	ON	OFF	OFF
16	468.95000	468.95000	OFF	OFF	HIGH	ON	OFF	OFF

COM4 400-470MHz 2020/11/13 19:43:16

Flig.9

Steps to Program Your Radios

Window 7&10

6. You may also Click **“Open”** button (See Flig.10) to load the preset channels from “channel data” folder. Please beware of your local laws and regulation of radio frequency use. FRS/GMRS channels are for USA only. They are not allowed in European countries. PMR446 channels are for UK and other European countries. **Please note, for CTCSS/DCS function, select built-in codes from the drop-down menu. Only under the same CTCSS/DCS code situation, the two channels are able to connect.**



Flig.10

Steps to Program Your Radios

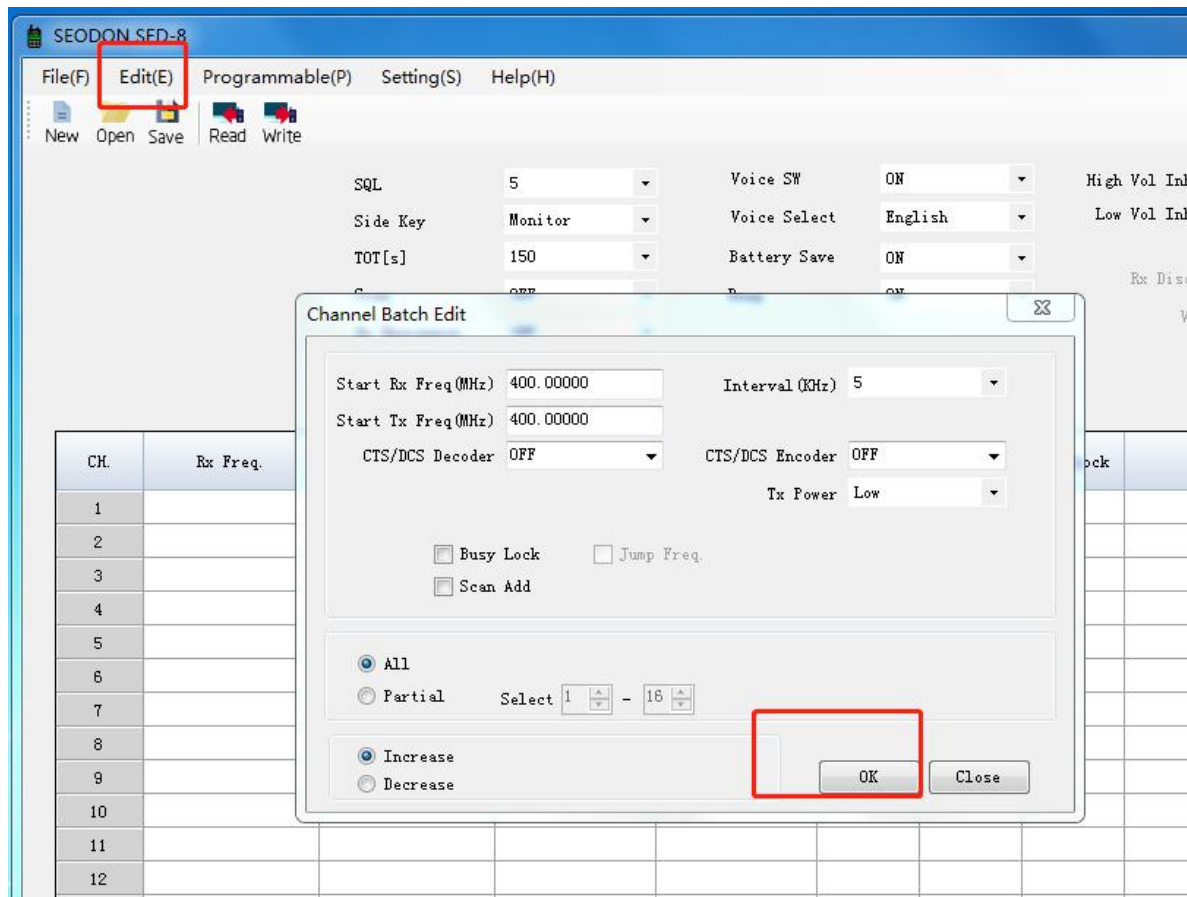
Window 7&10

7. More options to enable advanced features or batch edit your channel frequency. Input your starting Rx(Receive) and Tx(Transmit) frequency and frequency space between each channel. Advanced feature options (eg. CTCSS/DCS) can be set together, once finish, click OK button to edit 16 channels at one time. See Flig.11



Steps to Program Your Radios

Window 7&10



Flig.11



Steps to Program Your Radios

Window 7&10

8. Advanced feature setting interface: See Flig.12

SQL	5	▼	Voice SW	ON	▼	High Vol Inhibit TX	<input checked="" type="checkbox"/>
Side Key	Monitor	▼	Voice Select	English	▼	Low Vol Inhibit TX	<input checked="" type="checkbox"/>
TOT[s]	150	▼	Battery Save	ON	▼	VOX	<input checked="" type="checkbox"/>
Scan	OFF	▼	Beep	ON	▼	Rx Disable Vox	<input type="checkbox"/>
Rx Emergency	OFF	▼				Vox Gain	1 <input type="button" value="▲"/> <input type="button" value="▼"/>

Flig.12



Steps to Program Your Radios

Window 7&10

9. Finally, when all settings are done, don' t forget to write the data into your radio to save all changes. Click " **Start**" Button to right all the changes , when all finish, click OK to save all changes. See Flig.13, Flig,14

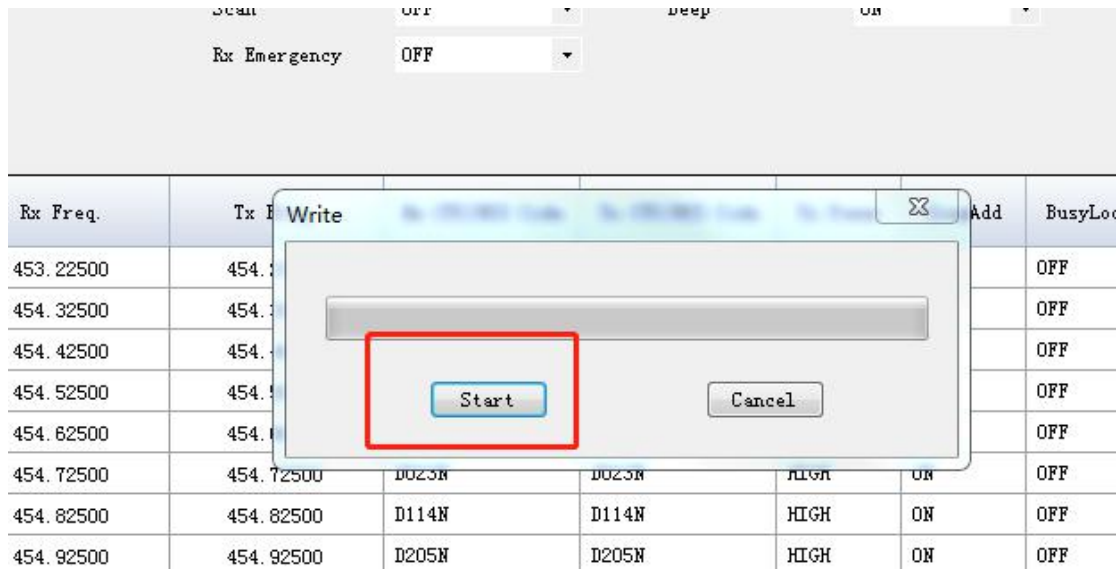
CH.	Rx Freq.	Tx Freq.	Rx CTC/DCS Code	Tx CTC/DCS Code	Tx Power	ScanAdd	BusyLock	JumpCode
1	453.22500	454.22500	69.3	69.3	HIGH	ON	OFF	OFF
2	454.32500	454.32500	100.0	100.0	HIGH	ON	OFF	OFF
3	454.42500	454.42500	151.4	151.4	HIGH	ON	OFF	OFF
4	454.52500	454.52500	203.5	203.5	HIGH	ON	OFF	OFF
5	454.62500	454.62500	241.8	241.8	HIGH	ON	OFF	OFF
6	454.72500	454.72500	000.0	000.0	LOW	ON	OFF	OFF

Flig.13



Steps to Program Your Radios

Window 7&10

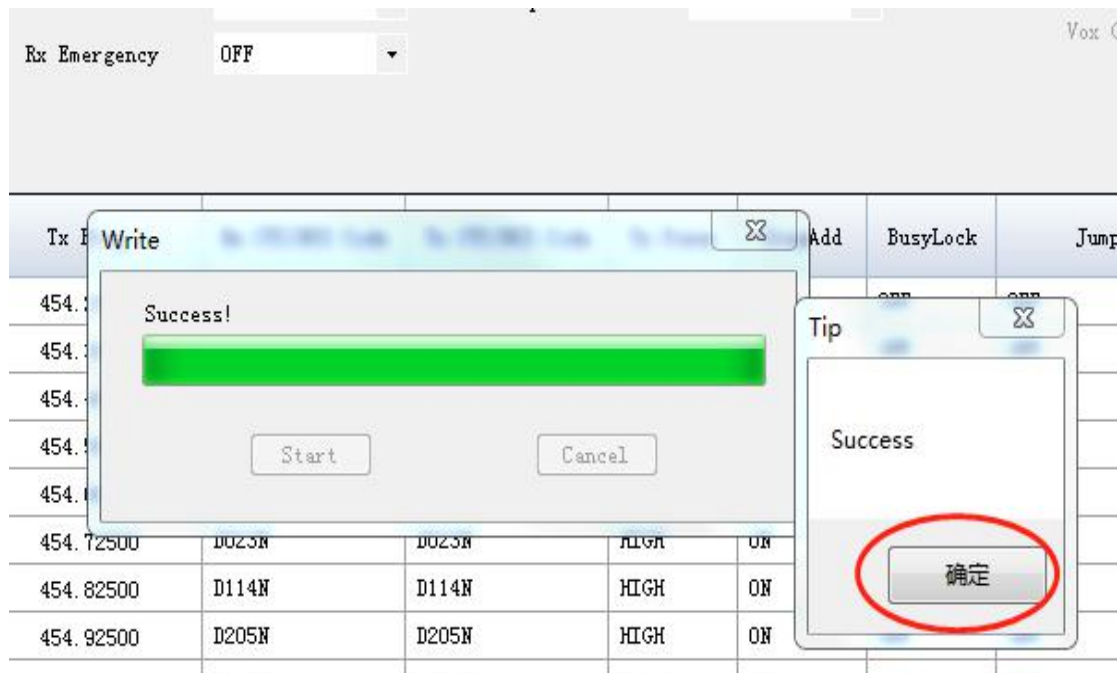


Flig.14



Steps to Program Your Radios

Window 7&10



Flig.15



Thank you for reading!

Seodon Team